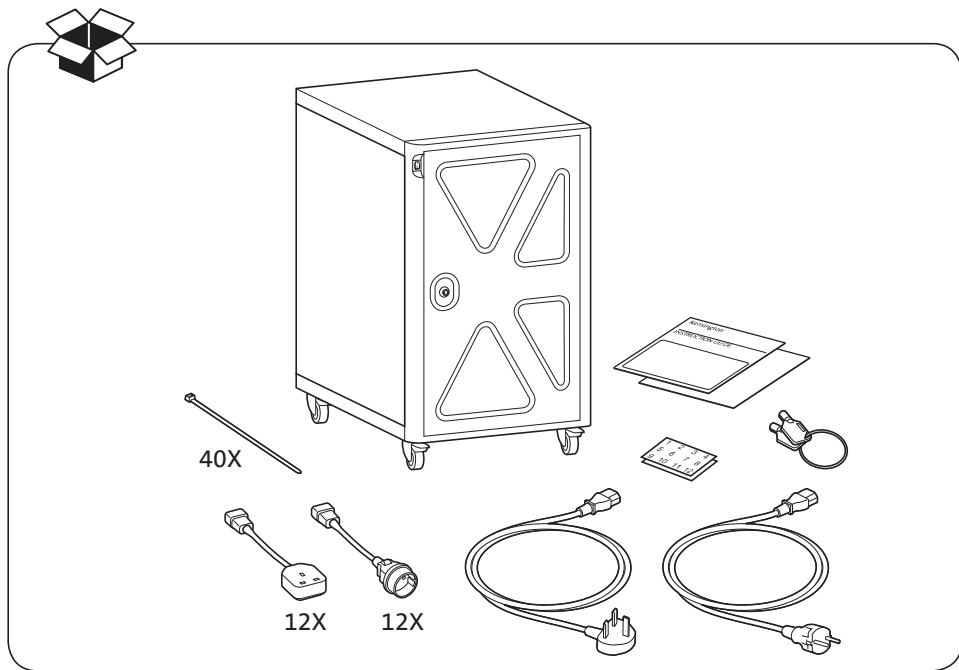


# Kensington®

## AC12 Security Charging Cabinet

INSTRUCTION GUIDE  
GUIDE D'INSTRUCTIONS  
BEDIENUNGSANLEITUNG

ISTRUZIONI  
MANUAL DE INSTRUCCIONES  
MANUAL DE INSTRUÇÕES

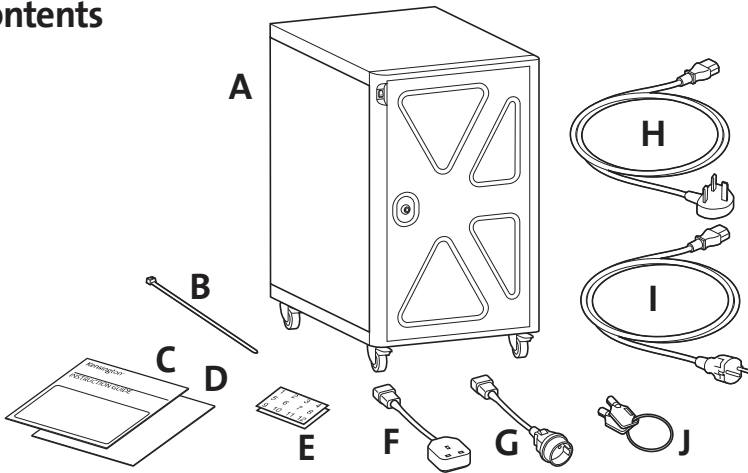


**Register Now!**  
Enregistrer maintenant !  
Jetzt registrieren!

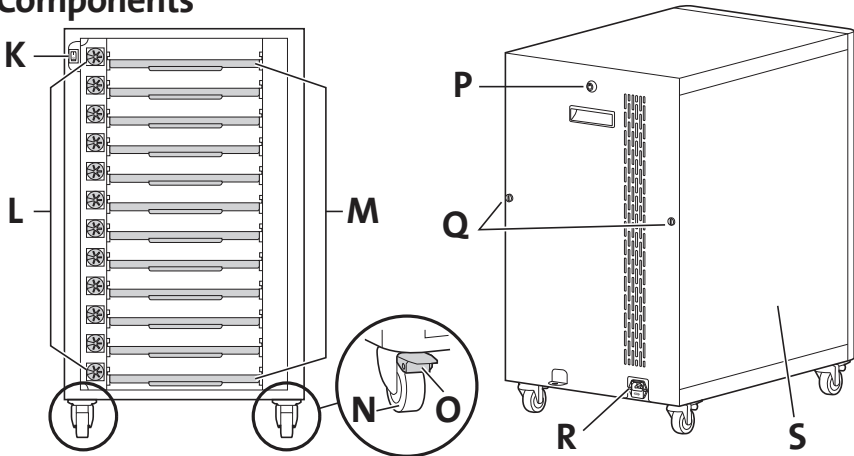
**Registrar ahora**  
Registra adesso  
Registe-se agora!

[register.kensington.com](https://register.kensington.com)

## Contents



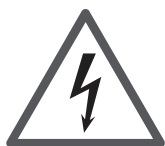
## Components



- A Security Charging Cabinet
- B Cable Ties (40X)
- C Instruction Guide
- D Warranty Card
- E Shelf Labels
- F UK Adapter (12x)
- G EU Adapter (12x)
- H UK Power Cable
- I EU Power Cable
- J Keys (2X)

- K Power Switch
- L Cable Grommets
- M Shelves for Devices
- N Wheel
- O Wheel Brake (Front Wheels)
- P Rear Door Lock
- Q Thumb Screws
- R Power Connector
- S Side Door Panel

# Getting Started



## Important Safeguards - We want you to be safe!

These cabinets are electrical devices. Use care with them and follow these important safeguards:

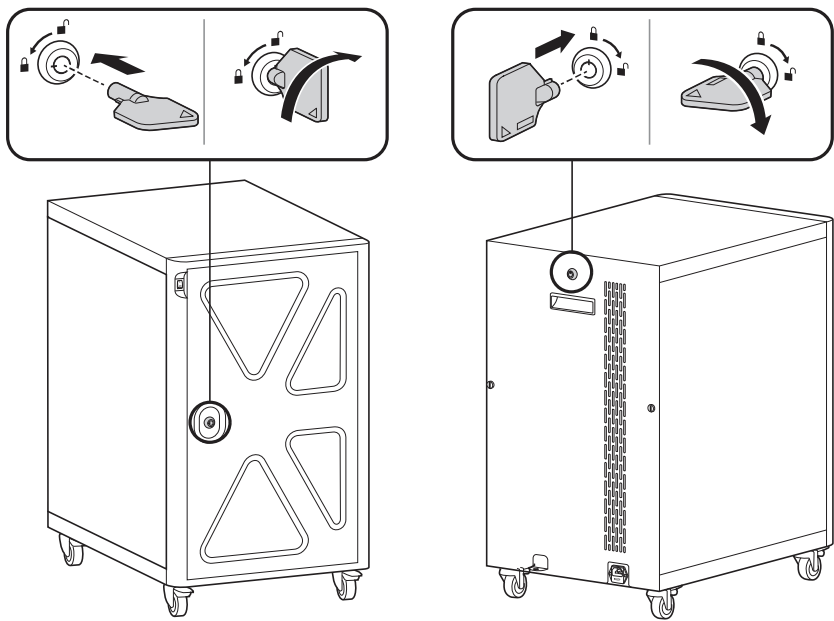
- Electrical devices are not toys. Children are often unaware of the hazards associated with electrical devices, so this unit must always be used by adults or with adult supervision.
- Do not use this unit outdoors.
- Liquids should not be stored in, set on or placed inside this unit.
- Never unplug this product from the outlet when your hands are wet.
- Set the power switch to the down OFF position before you unplug the unit from the wall, plug the unit into the wall, or plug in devices.
- Be careful with the power cord. Do not jam the power cord against sharp edges. Do not use the unit if the cord appears to be damaged or if the ground prong is missing. When the unit is not plugged in, wrap the power cord and store in the IT area.
- Do not use an extension cord with this unit.
- Inadequate repair can create significant hazards to users and is not covered by the warranty. Repairs should always be performed by a qualified electrician.
- Do not sit, stand or ride trolley. Do not run over cable. If cable is damaged unplug it.

## Electrical Testing

- If you are concerned about electric surges in your building and have decided to use a surge protector, choose one that is 10 Amps continuous or greater.
- Before using your new charging cabinet, have a qualified electrician verify the current draw does not exceed the rating of the unit when all the devices are installed.
- Test the contact integrity of the wall outlet using a receptacle tension tester such as a Woodhead 1760 or a Safeplug 1700.
- Test the branch circuit for ground integrity and branch circuit protection.
- Do not plug in the unit if the switch, receptacles, or power cord have been damaged or if the ground prong is missing from the plug. If repairs are ever needed, they should be performed by a qualified electrician.

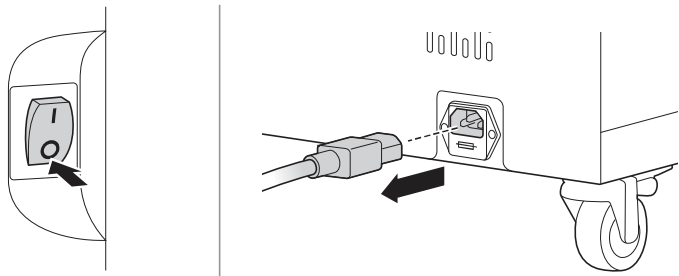
# Locks

Use the same key for both the front and rear locks.

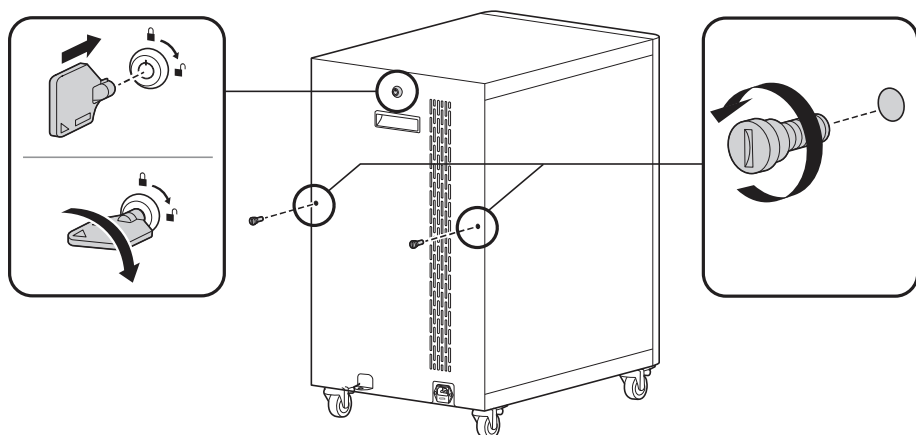


# Loading Devices, Cable Management

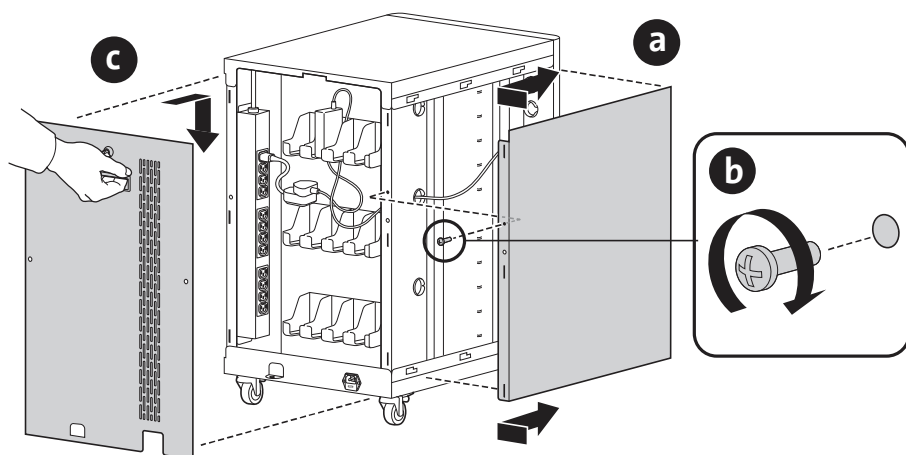
- 1 Make sure power switch is in the off position and the external AC power cable is unplugged before installing power adaptaters.



- 2** Unlock the rear door and remove the two thumbscrews.

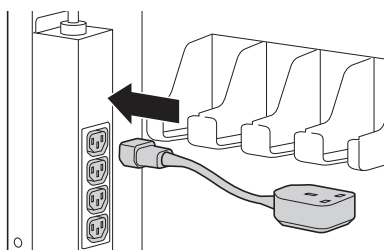


- 3** Remove the rear door panel, remove the side door panel screw, then remove the side door panel.

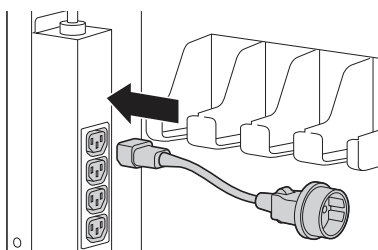


- 4** Plug the appropriate regional adapter into the power strip.

**UK**

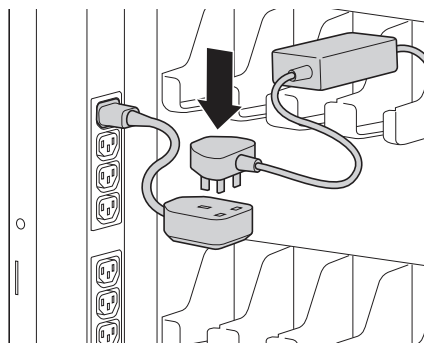


**EU**

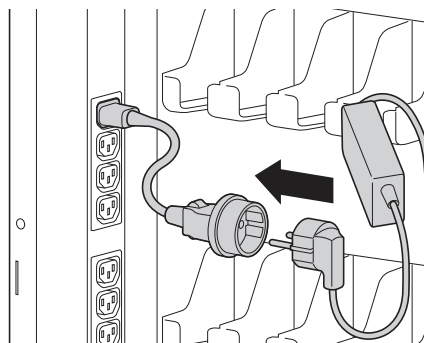


- 5 Plug your device power adapter to the regional adapter.

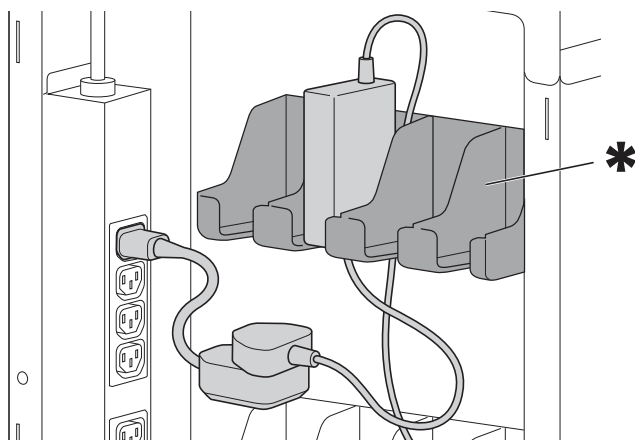
**UK**



**EU**

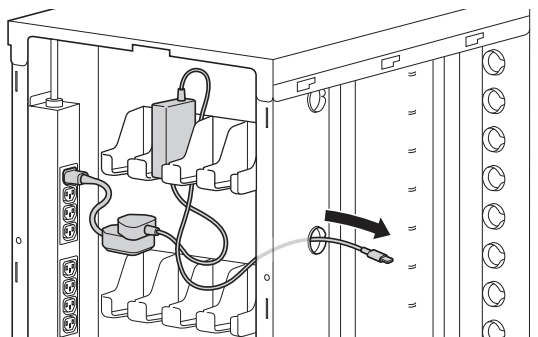


- 6 Store the power adapter in bay (if applicable).

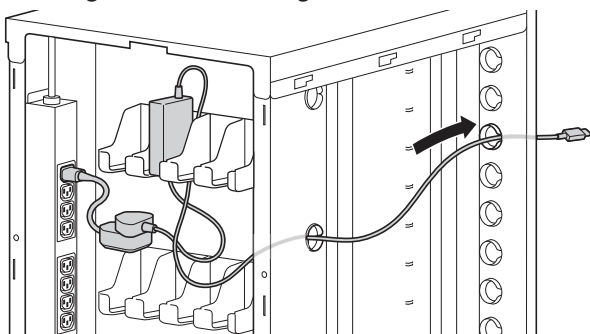


\* Remove tray if necessary.

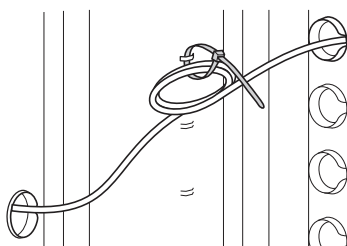
- 7 Route the cable through the cable hole.



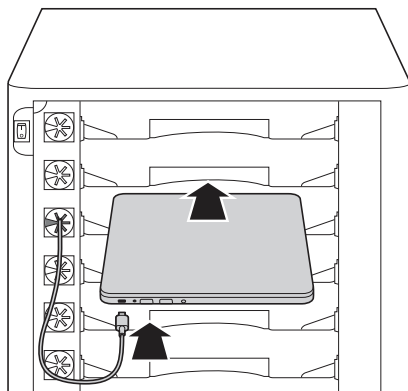
- 8** Route the cable through the desired front grommet.



- 9** Optional: Use cable ties to secure cables to chassis as desired.

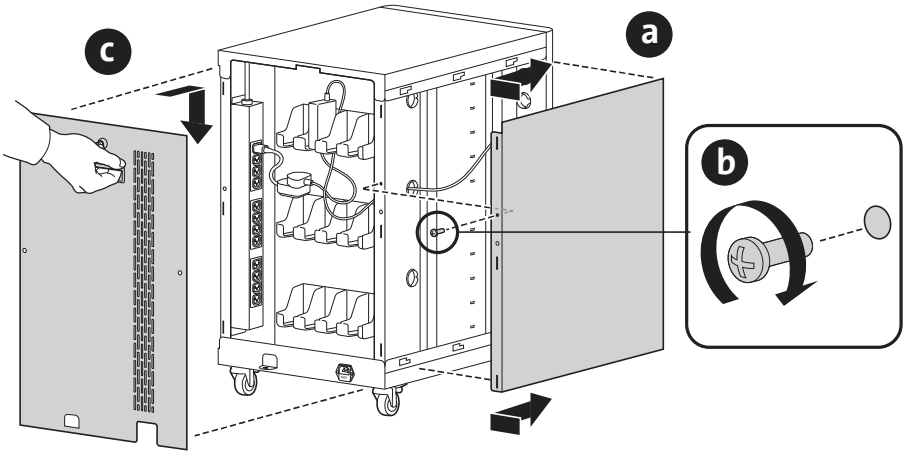


- 10** Plug into personal computing device.

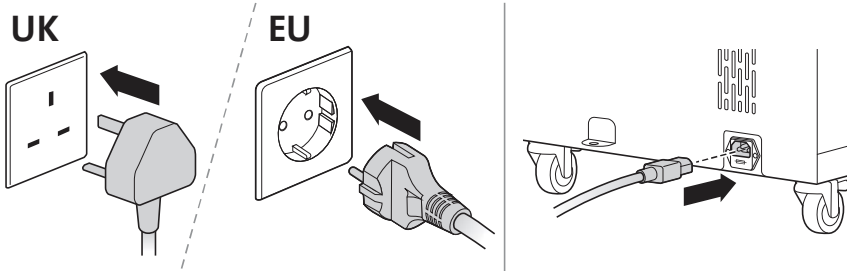


- 11** Repeat steps 4 through 10 for each device.

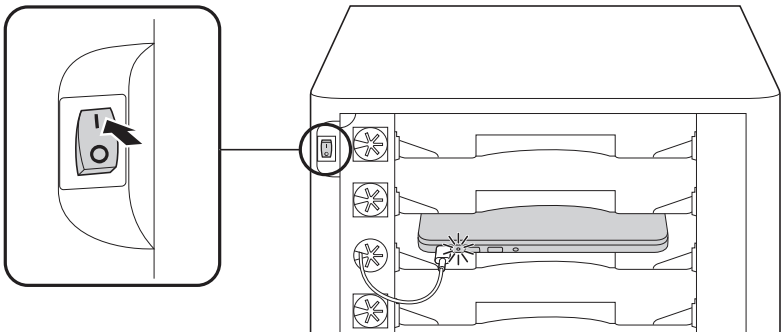
**12** Replace the side and rear door panels.



**13** Plug in external AC power cable.

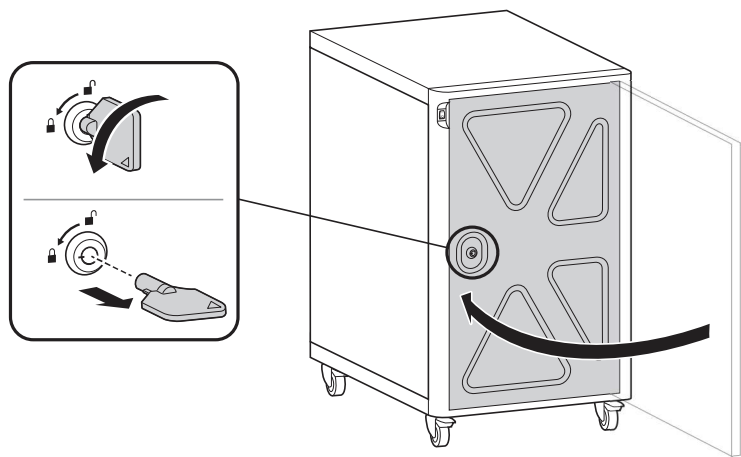


**14** Turn on power switch to start charging. Check charging status on personal computing device.



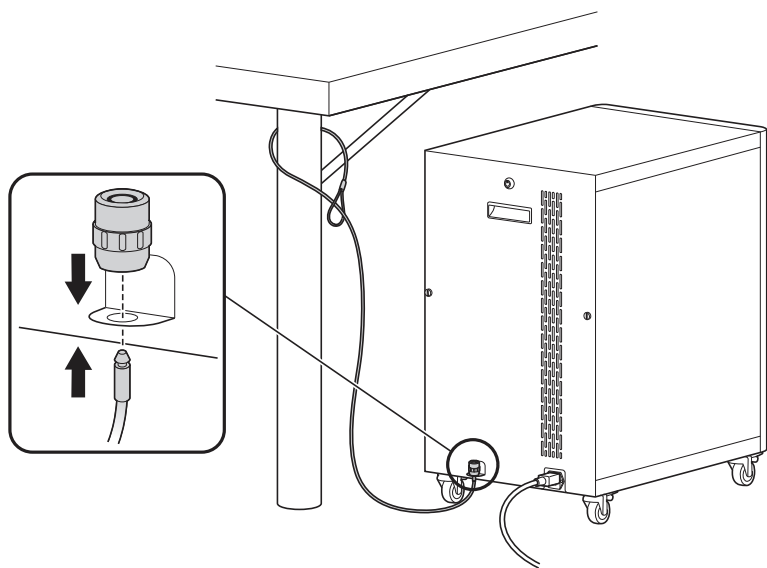


**15** Close the front door and lock cabinet using key.

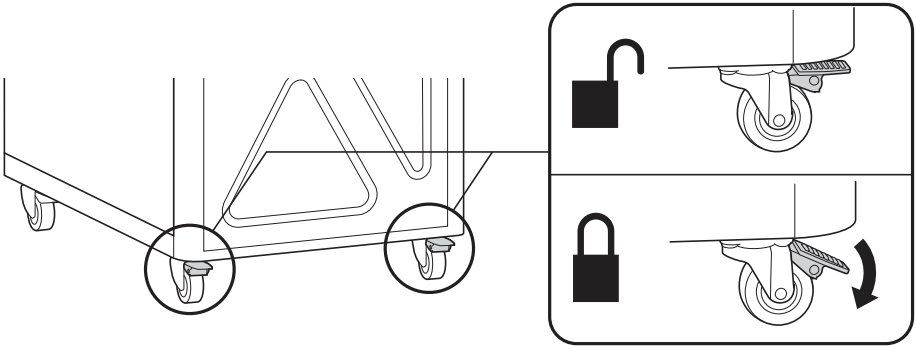


**Securing the Cabinet**

Use a cable lock (K64615 – sold separately) to lock the cabinet and tether it to an anchor.



# Wheel Locks



## Troubleshooting

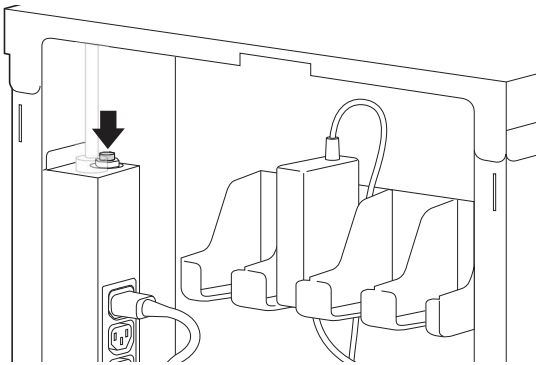
### *How do I know if my devices will draw more than the allowed current?*

Total wattage for all devices attached must be below cabinet’s maximum rating of 2400 watts. Have a qualified electrician verify the unit’s current draw. Perform this test with devices installed and batteries discharged.

### *The devices are all plugged in, but they won’t charge. What do I do?*

First Check the cabinet: With the switch in the down OFF position, inspect the main power cord, and plug to make sure they’re undamaged. Unplug the cabinet, and plug the cord into a working power outlet.

Unlock and open the rear door. Check the internal circuit breaker located on the power strip, press the button to reset.



Next, check the devices: Verify that each device is connected to its power adapter and that each brick is plugged into the power column. Move the switch to the up ON position to direct power to the devices. Still need some help? Call Kensington at 1-800-535-4242 for assistance.

### *My power cord/plug is damaged. Is it covered under warranty?*

No, it is not covered under warranty. If the plug is damaged, have a qualified electrician replace it. If you need a replacement cord, contact Kensington at 1-800-535-4242.

### ***When I plug in the unit it trips the circuit breaker. What is wrong?***

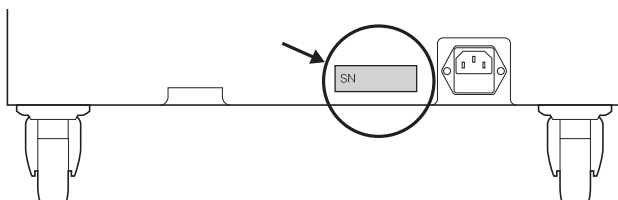
The cabinets are designed to run on a 10 amp circuit. If you have other equipment or appliances plugged into the same circuit you may be overloading it. Have a qualified electrician check that adequate power is available in the circuit.

### ***My unit was damaged during shipment. What should I do?***

Kensington has a program established with our freight carriers to address ship damage. Please contact Kensington at 1-800-535-4242 and we'll work with you.

### ***How do I find the unit's serial number?***

The serial number label is located on back of the unit.



## **Technical Support**

Technical support is available to all registered users of Kensington products. Technical Support contact information can be found on the back page of this manual.

### **Web Support**

You may find the answer to your problem in the Frequently Asked Questions (FAQ) section of the Support area on the Kensington Website: [www.support.kensington.com](http://www.support.kensington.com).

### **Telephone Support**

There is no charge for technical support except long-distance charges where applicable. Please visit [www.kensington.com](http://www.kensington.com) for telephone support hours. In Europe, technical support is available by telephone Monday to Friday 09:00 to 18:00 (Central European time).

Please note the following when calling support:

- Call from a phone where you have access to your device.
- Be prepared to provide the following information:
  - Name, address, and telephone number
  - Name of the Kensington product
  - Make and model of your computer
  - Symptoms of the problem and what led to them

### **CE DECLARATION OF CONFORMITY**

Kensington declares that this product is in compliance with the essential requirements and other relevant provisions of applicable EC directives.

For Europe, a copy of the Declaration of Conformity for this product may be obtained by clicking on the 'Compliance Documentation' link at [www.support.kensington.com](http://www.support.kensington.com).

### **INFORMATION FOR EU MEMBER-STATES ONLY**



The use of the symbol indicates that this product may not be treated as household waste. By ensuring this product is disposed of correctly, you will help prevent potential negative consequences for the environment and human health, which could otherwise be caused by inappropriate waste handling of this product. For more detailed information about recycling of this product, please contact your local city office, your household waste disposal service, or the shop where you purchased the product.

Kensington and the ACCO name and design are registered trademarks of ACCO Brands. All other registered and unregistered trademarks are the property of their respective owners.

© 2016 Kensington Computer Products Group, a division of ACCO Brands USA LLC. Any unauthorized copying, duplicating, or other reproduction of the contents hereof is prohibited without written consent from Kensington Computer Products Group. All rights reserved. 04/16